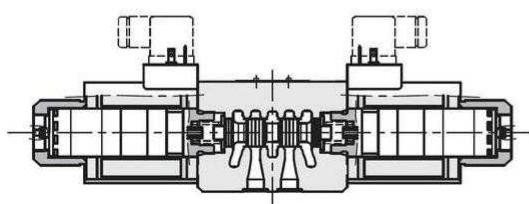
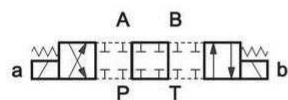


Electroválvulas

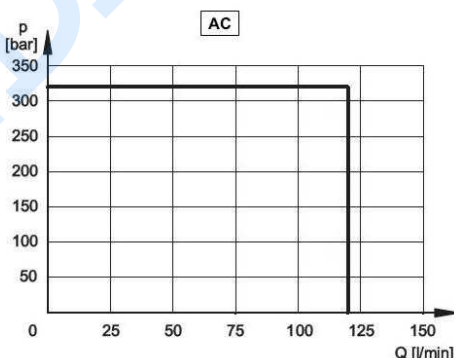
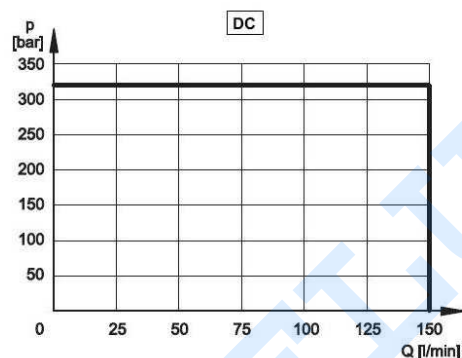
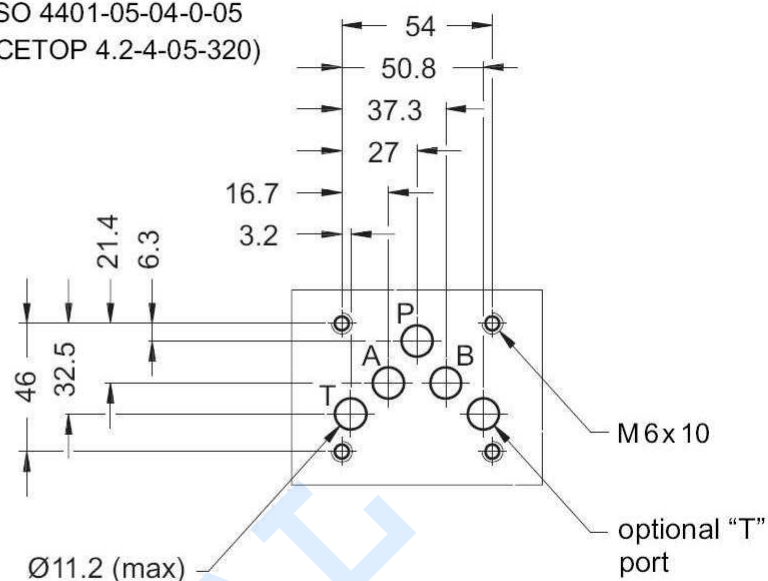
Electroválvulas NG10 - Cetop 5

Electro. NG10- corredera S1

1/1



ISO 4401-05-04-0-05
(CETOP 4.2-4-05-320)



Presión máxima de trabajo: en P - A - B= 320 bar
en T - Corriente Continua=210 bar
en T - Corriente Alterna=140 bar

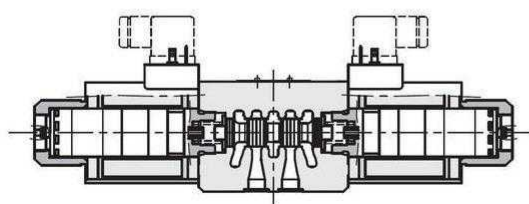
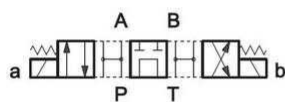
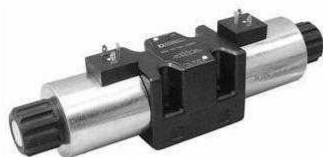
Artículo	Tamaño	Voltaje (V)	Caudal máx. (l/min)	Pres. max. (bar)	f (Hz)
DS5-S1/11N-A110-50K1	NG-10	110 VAC	120	320	50
DS5-S1/11N-A230-50K1	NG-10	220 VAC	120	320	50
DS5-S1/11N-A24-50K1	NG-10	24 VAC	120	320	50
DS5-S1/11N-A48-50K1	NG-10	48 VAC	120	320	50
DS5-S1/11N-D12K1	NG-10	12 VDC	120	320	
DS5-S1/11N-D24K1	NG-10	24 VDC	120	320	
DS5-S1/11N-D48K1	NG-10	48 VDC	120	320	

Electroválvulas

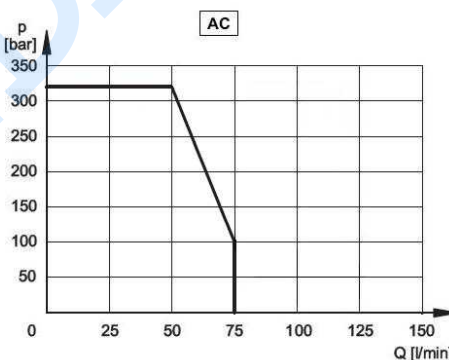
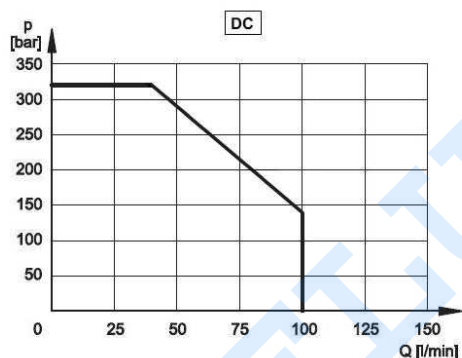
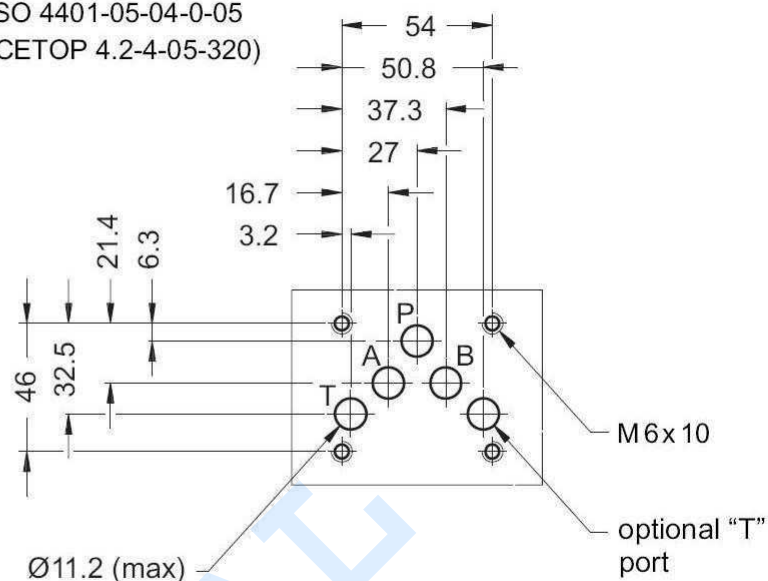
Electroválvulas NG10 - Cetop 5

Electro. NG10- corredera S4

1/1



ISO 4401-05-04-0-05
(CETOP 4.2-4-05-320)



Presión máxima de trabajo en P - A - B: 320 bar
 en T - Corriente Continua: 210 bar
 en T - Corriente Alterna: 140 bar

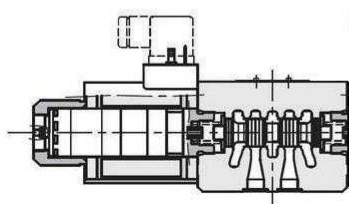
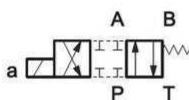
Artículo	Tamaño	Voltaje (V)	Caudal máx. (l/min)	Pres. max. (bar)	f (Hz)
DS5-S4/11N-A110-50K1	NG-10	110 VAC	120	320	50
DS5-S4/11N-A230-50K1	NG-10	220 VAC	120	320	50
DS5-S4/11N-A48-50K1	NG-10	48 VAC	120	320	50
DS5-S4/11N-D12K1	NG-10	12 VDC	120	320	
DS5-S4/11N-D24K1	NG-10	24 VDC	120	320	
DS5-S4/11N-D48K1	NG-10	48 VDC	120	320	

Electroválvulas

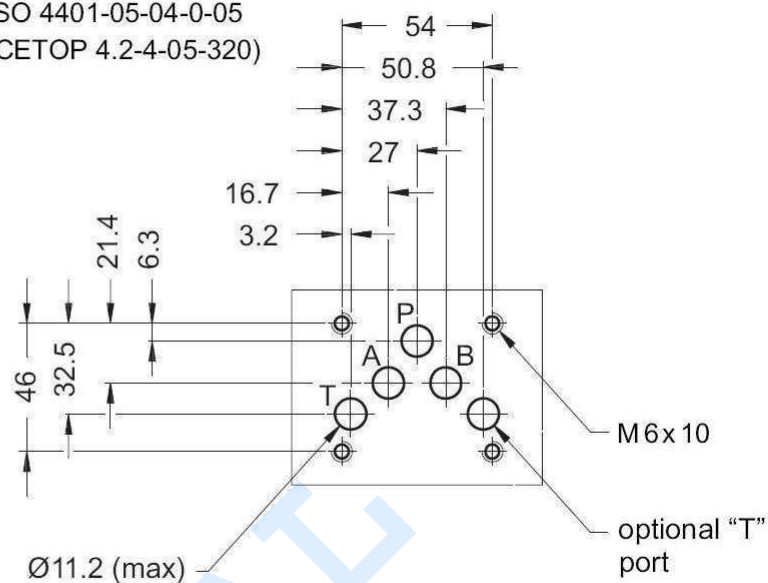
Electroválvulas NG10 - Cetop 5

Electro. NG10- corredera TA

1/1



ISO 4401-05-04-0-05
(CETOP 4.2-4-05-320)



Presión máxima de trabajo: en P - A - B= 320 bar
en T - Corriente Continua=210 bar
en T - Corriente Alterna=140 bar

Caudal máximo: Corriente Continua= 150 l/min
Corriente Alterna=120 l/min

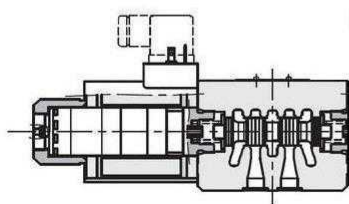
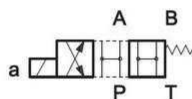
Artículo	Tamaño	Voltaje (V)	Caudal máx. (l/min)	Pres. max. (bar)	f (Hz)
DS5-TA/11N-A110-50K1	NG-10	110 VAC	120	320	50
DS5-TA/11N-A230-50K1	NG-10	220 VAC	120	320	50
DS5-TA/11N-A24-50K1	NG-10	24 VAC	120	320	50
DS5-TA/11N-A48-50K1	NG-10	48 VAC	120	320	50
DS5-TA/11N-D12K1	NG-10	12 VDC	120	320	
DS5-TA/11N-D24K1	NG-10	24 VDC	120	320	
DS5-TA/11N-D48K1	NG-10	48 VDC	120	320	

Electroválvulas

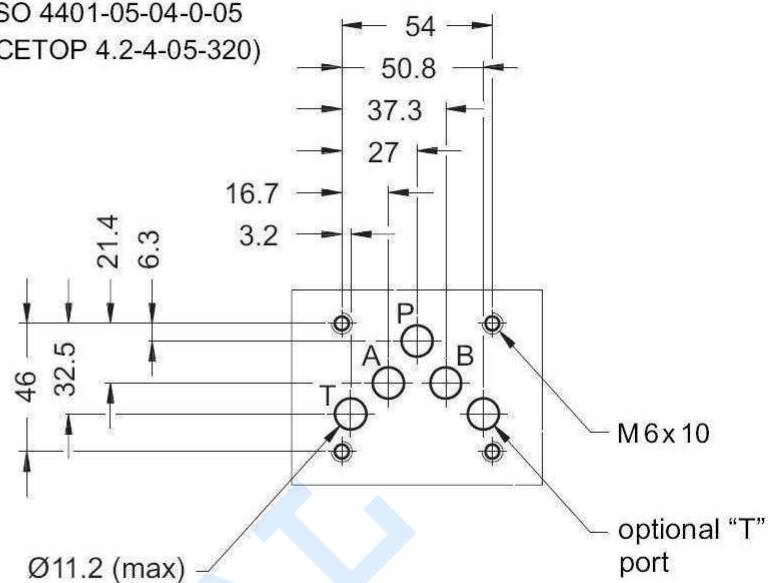
Electroválvulas NG10 - Cetop 5

Electro. NG10- corredera SA2

1/1



ISO 4401-05-04-0-05
(CETOP 4.2-4-05-320)



Presión máxima de trabajo: en P - A - B= 320 bar
en T - Corriente Continua=210 bar
en T - Corriente Alterna=140 bar

Caudal máximo: Corriente Continua= 150 l/min
Corriente Alterna=120 l/min

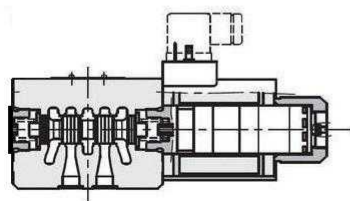
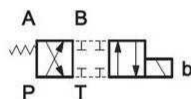
Artículo	Tamaño	Voltaje (V)	Caudal máx. (l/min)	Pres. max. (bar)	f (Hz)
DS5-SA2/11N-A110-50K1	NG-10	110 VAC	120	320	50
DS5-SA2/11N-A230-50K1	NG-10	220 VAC	120	320	50
DS5-SA2/11N-A24-50K1	NG-10	24 VAC	120	320	50
DS5-SA2/11N-A48-50K1	NG-10	48 VAC	120	320	50
DS5-SA2/11N-D12K1	NG-10	12 VDC	120	320	
DS5-SA2/11N-D24K1	NG-10	24 VDC	120	320	
DS5-SA2/11N-D48K1	NG-10	48 VDC	120	320	

Electroválvulas

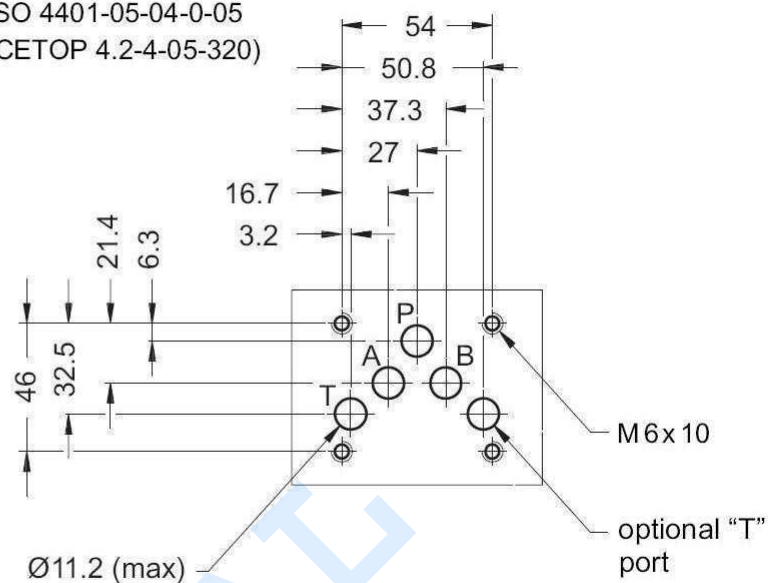
Electroválvulas NG10 - Cetop 5

Electro. NG10- corredera TB

1/1



ISO 4401-05-04-0-05
(CETOP 4.2-4-05-320)



Presión máxima de trabajo: en P - A - B= 320 bar
en T - Corriente Continua=210 bar
en T - Corriente Alterna=140 bar

Caudal máximo: Corriente Continua= 150 l/min
Corriente Alterna=120 l/min

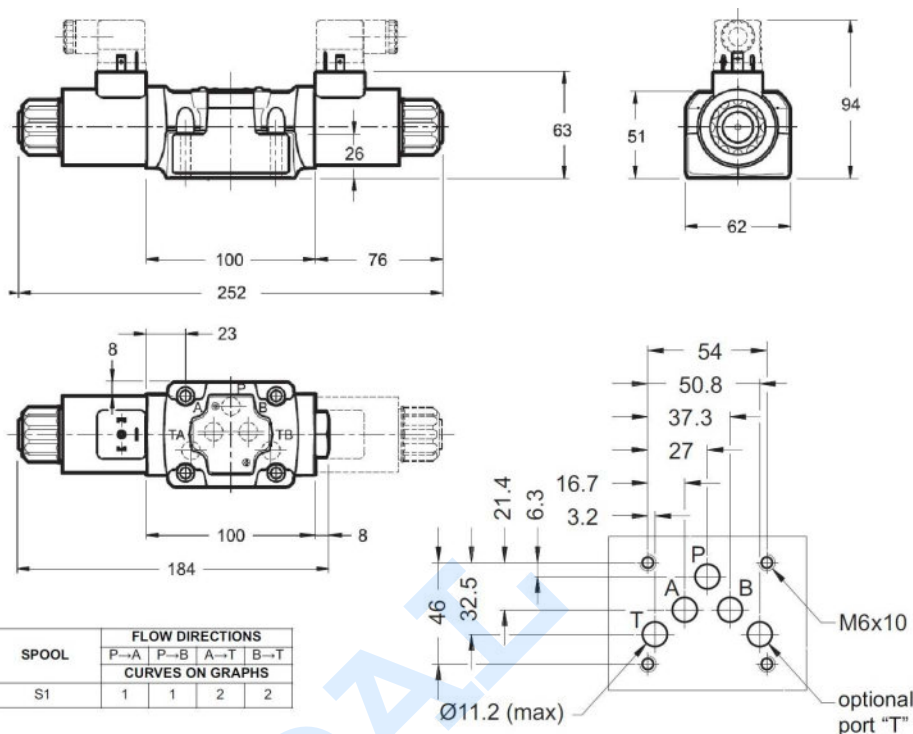
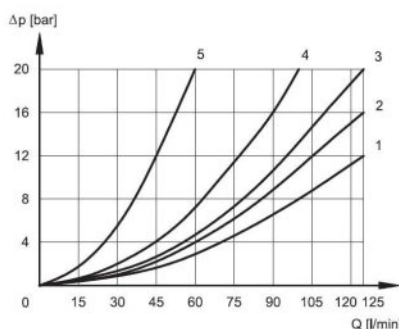
Artículo	Tamaño	Voltaje (V)	Caudal máx. (l/min)	Pres. max. (bar)	f (Hz)
DS5-TB/11N-A110-50K1	NG-10	110 VAC	120	320	50
DS5-TB/11N-A230-50K1	NG-10	220 VAC	120	320	50
DS5-TB/11N-A24-50K1	NG-10	24 VAC	120	320	50
DS5-TB/11N-A48-50K1	NG-10	48 VAC	120	320	50
DS5-TB/11N-D12K1	NG-10	12 VDC	120	320	
DS5-TB/11N-D24K1	NG-10	24 VDC	120	320	
DS5-TB/11N-D48K1	NG-10	48 VDC	120	320	

Electroválvulas

Electroválvulas NG10 - Cetop 5

Electro. NG10 compacta- corredera S1

1/1



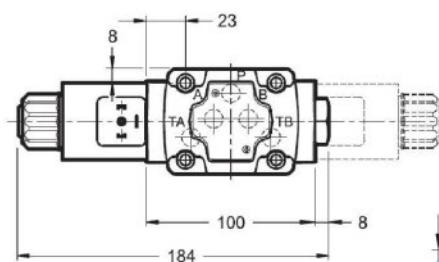
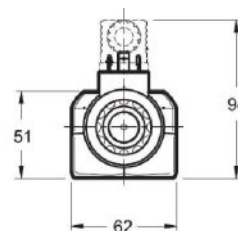
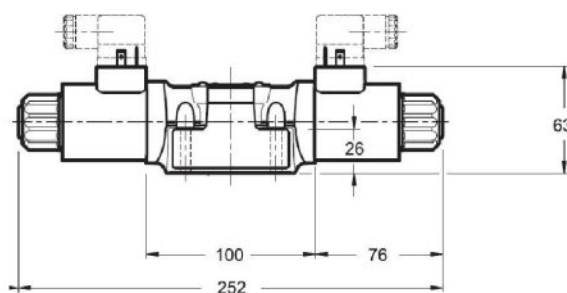
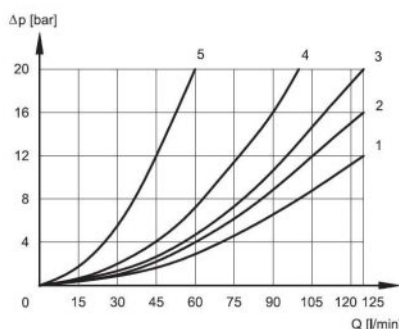
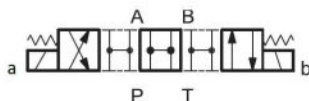
Artículo	Tamaño	Voltaje (V)	CAUDAL MAX (l/min)	Caudal máx. (l/min)	PRESIÓN MAX. (bar)	Pres. max. (bar)
DL5B-S1/10N-D12K1	NG-10	12 VDC	125	125	320	320
DL5B-S1/10N-D24K1	NG-10	24 VDC	125	125	320	320

Electroválvulas

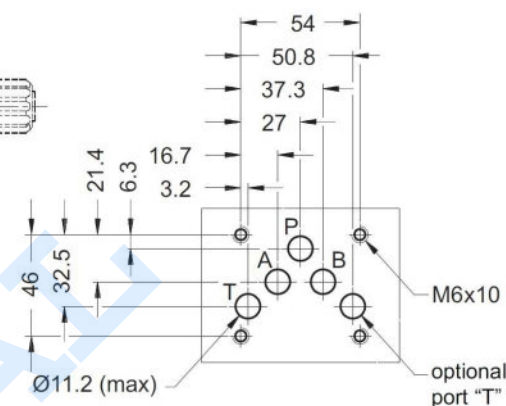
Electroválvulas NG10 - Cetop 5

Electro. NG10 compacta- corredera S2

1/1



SPOOL	FLOW DIRECTIONS			
	P→A	P→B	A→T	B→T
S2	1	1	1	1



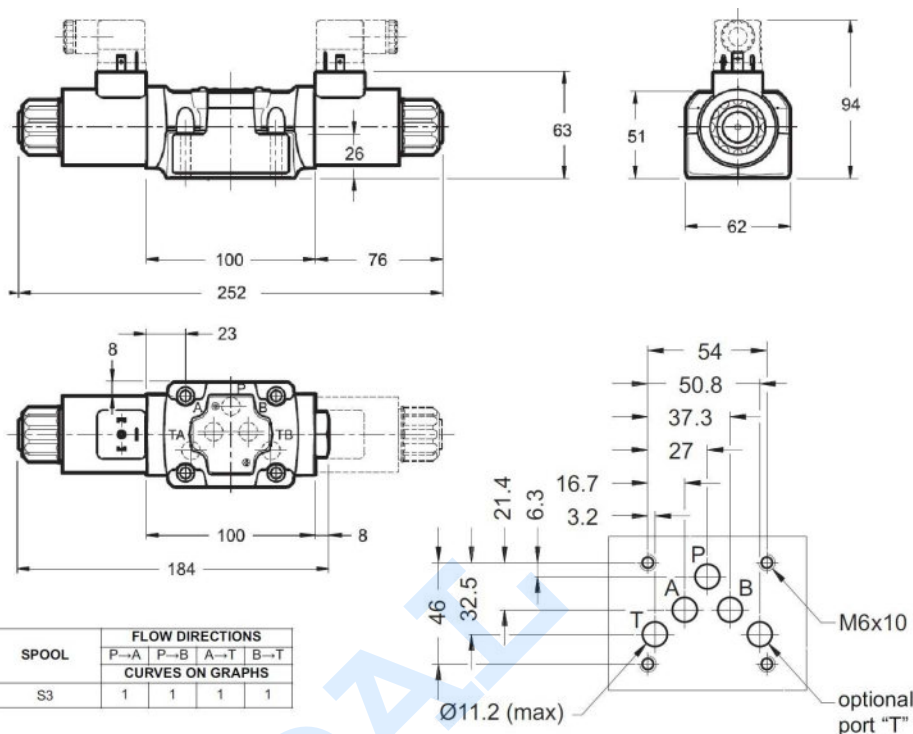
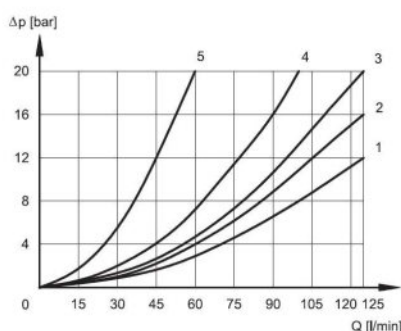
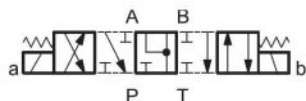
Artículo	Tamaño	Voltaje (V)	CAUDAL MAX (l/min)	Caudal máx. (l/min)	PRESIÓN MAX. (bar)	Pres. max. (bar)
DL5B-S2/10N-D12K1	NG-10	12 VDC	125	125	320	320
DL5B-S2/10N-D24K1	NG-10	24 VDC	125	125	320	320

Electroválvulas

Electroválvulas NG10 - Cetop 5

Electro. NG10 compacta- corredera S3

1/1



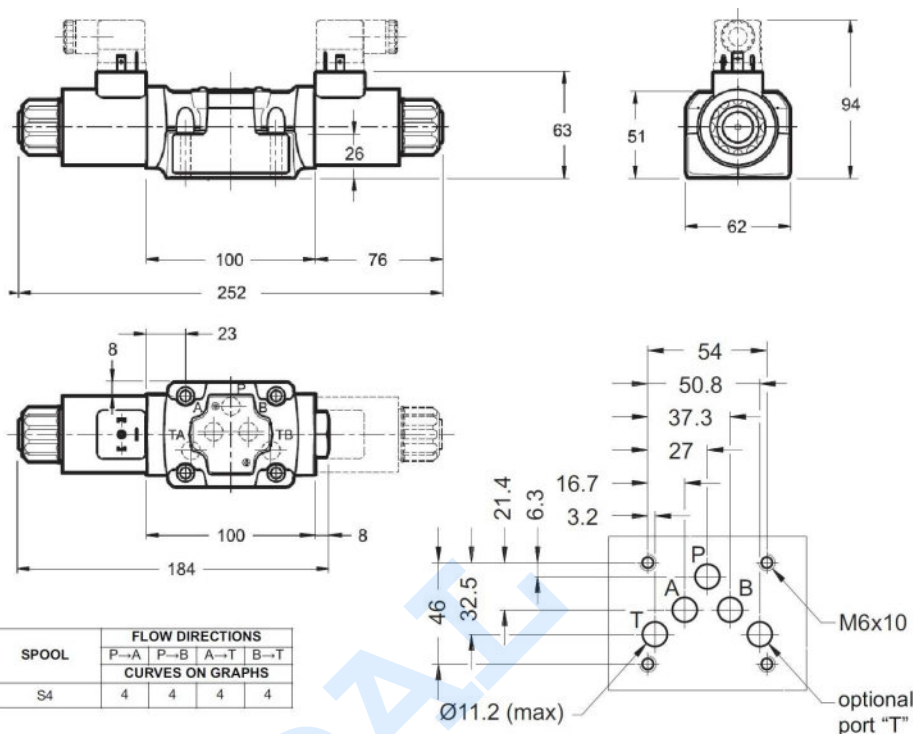
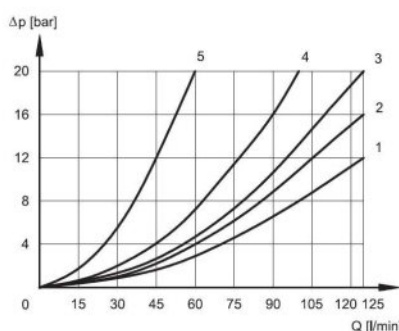
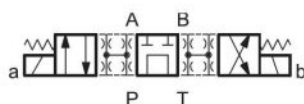
Artículo	Tamaño	Voltaje (V)	CAUDAL MAX (l/min)	Caudal máx. (l/min)	PRESIÓN MAX. (bar)	Pres. max. (bar)
DL5B-S3/10N-D12K1	NG-10	12 VDC	125	125	320	320
DL5B-S3/10N-D24K1	NG-10	24 VDC	125	125	320	320

Electroválvulas

Electroválvulas NG10 - Cetop 5

Electro. NG10 compacta- corredera S4

1/1



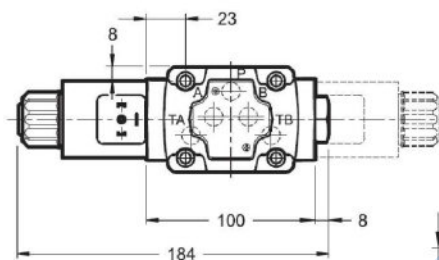
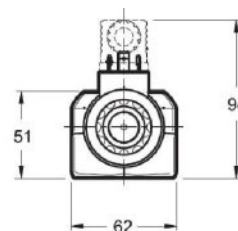
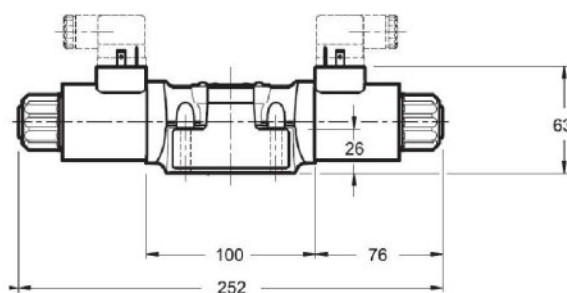
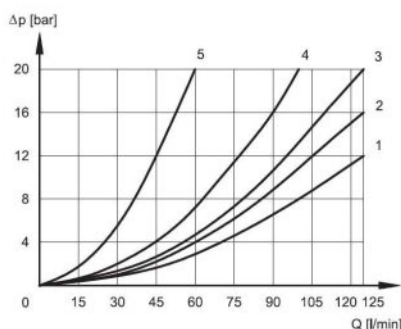
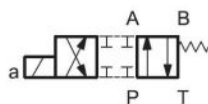
Artículo	Tamaño	Voltaje (V)	CAUDAL MAX (l/min)	Caudal máx. (l/min)	PRESIÓN MAX. (bar)	Pres. max. (bar)
DL5B-S4/10N-D12K1	NG-10	12 VDC	125	125	320	320
DL5B-S4/10N-D24K1	NG-10	24 VDC	125	125	320	320

Electroválvulas

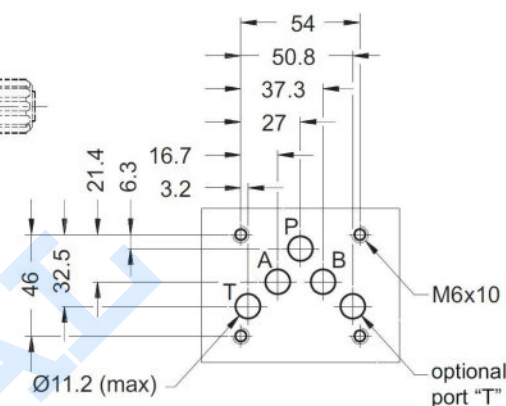
Electroválvulas NG10 - Cetop 5

Electro. NG10 compacta- corredera TA

1/1



SPOOL	FLOW DIRECTIONS			
	P→A	P→B	A→T	B→T
TA	2	2	3	3



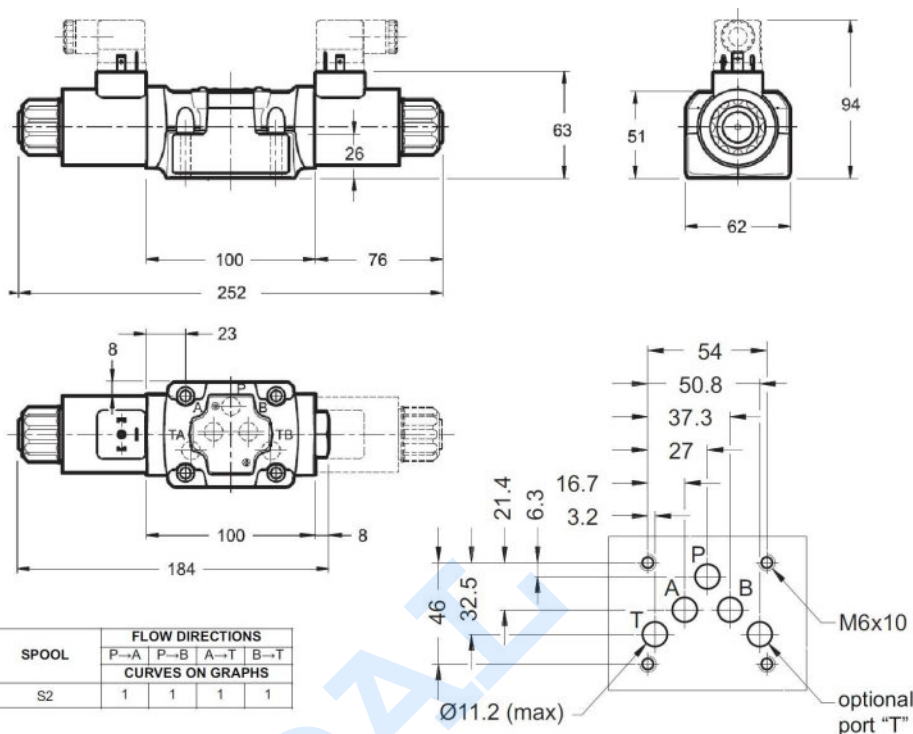
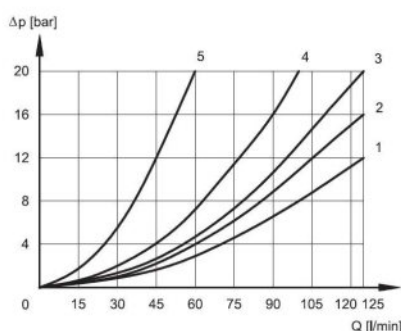
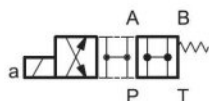
Artículo	Tamaño	Voltaje (V)	CAUDAL MAX (l/min)	Caudal máx. (l/min)	PRESIÓN MAX. (bar)	Pres. max. (bar)
DL5B-TA/10N-D12K1	NG-10	12 VDC	125	125	320	320
DL5B-TA/10N-D24K1	NG-10	24 VDC	125	125	320	320

Electroválvulas

Electroválvulas NG10 - Cetop 5

Electro. NG10 compacta- corredera SA2

1/1



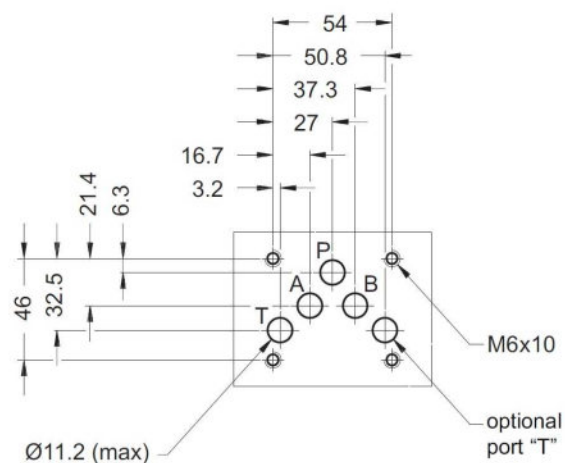
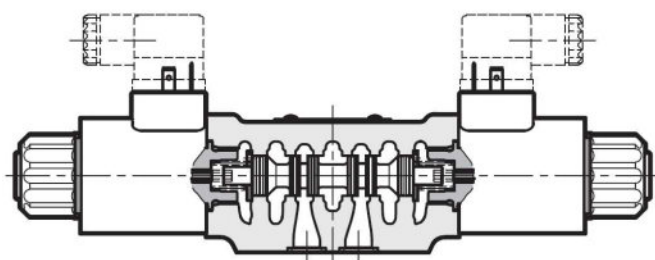
Artículo	Tamaño	Voltaje (V)	CAUDAL MAX (l/min)	Caudal máx. (l/min)	PRESIÓN MAX. (bar)	Pres. max. (bar)
DL5B-SA2/10N-D12K1	NG-10	12 VDC	125	125	320	320
DL5B-SA2/10N-D24K1	NG-10	24 VDC	125	125	320	320

Electroválvulas

Electroválvulas NG10 - Cetop 5

Electro. NG10 compacta- corredera TB

1/1



Artículo	Tamaño	Voltaje (V)	CAUDAL MAX (l/min)	Caudal máx. (l/min)	PRESIÓN MAX. (bar)	Pres. max. (bar)
DL5B-TB/10N-D12K1	NG-10	12 VDC	125	125	320	320
DL5B-TB/10N-D24K1	NG-10	24 VDC	125	125	320	320

Electroválvulas

Elementos modulares NG10

Bobinas corriente continua para DS5/11N

1/1



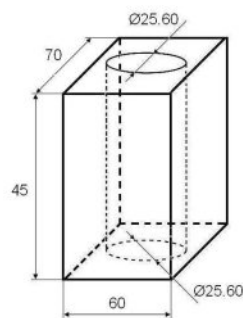
Artículo	Voltaje (V)	Electroválvula
C31-D12K1/20	12 VDC	DS5/11N
C31-D24K1/20	24 VDC	DS5/11N
C31-D48K1/20	48 VDC	DS5/11N

Electroválvulas

Elementos modulares NG10

Bobinas corriente alterna para DS5/NG10

1/1



Artículo	Voltaje (V)	Electroválvula	f (Hz)
C25.4-A24-50K1/11	24 VAC	NG-10	50
C25.4-A110-50K1/10	24 VAC	NG-10	50
C25.4-A230-50K1/10	230 VAC	NG-10	50
C25.4-A48-50K1/10	48 VAC	NG-10	50

Electroválvulas

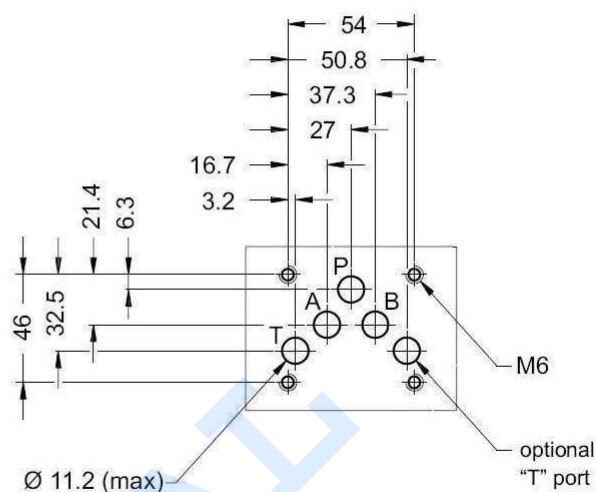
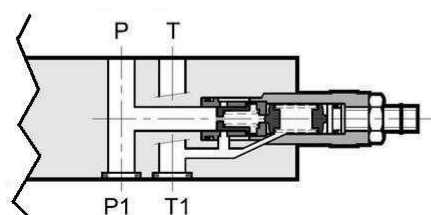
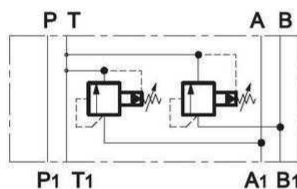
Elementos modulares NG10

Limitadora doble en A y B -descarga en T

1/1



ISO 4401-05-04-0-05
CETOP 4.2-4-05-320



Artículo	Tamaño	Caudal máx. (l/min)	Pres. max. (bar)	Campo reg. (bar)
RQ4M3-DT/51	NG-10	120	350	0 - 70
RQ4M4-DT/51	NG-10	120	350	0 - 140
RQ4M5-DT/51	NG-10	120	350	0 - 210

Electroválvulas

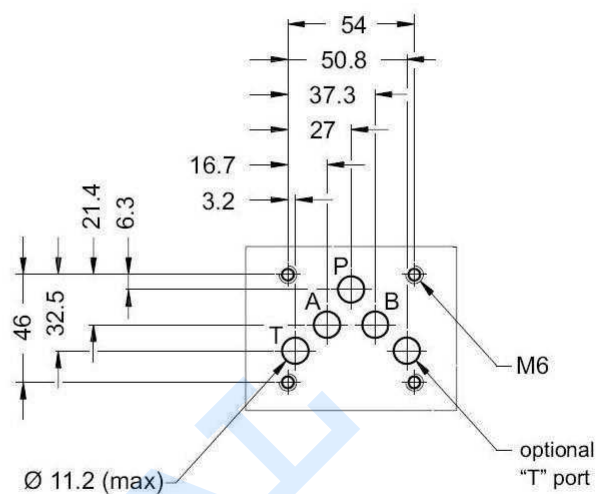
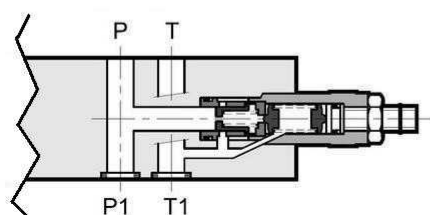
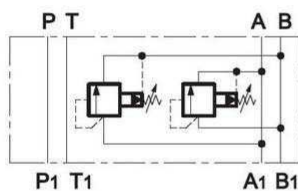
Elementos modulares NG10

Limit. doble en A y B -descarga cruzada

1/1



ISO 4401-05-04-0-05
CETOP 4.2-4-05-320



Artículo	Tamaño	Caudal máx. (l/min)	Pres. max. (bar)	Campo reg. (bar)
RQ4M3-D/51	NG-10	120	350	0 - 70
RQ4M5-D/51	NG-10	120	350	0 - 210

Electroválvulas

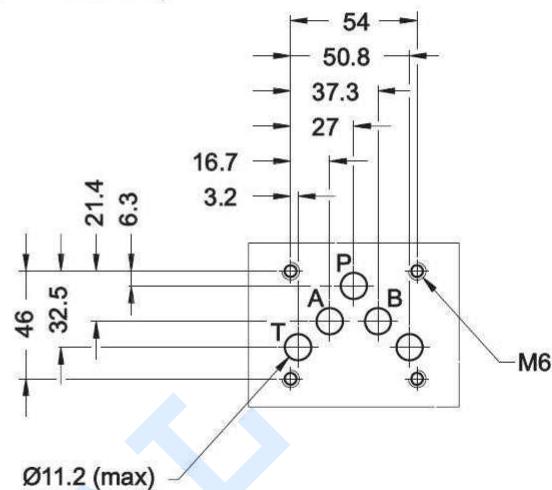
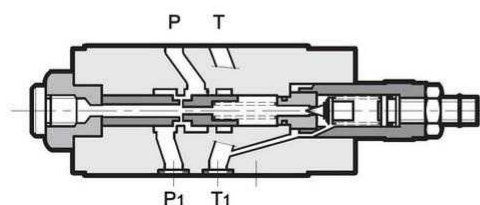
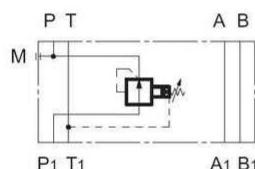
Elementos modulares NG10

Val. reductora de presión pilotada NG10

1/1



ISO 4401-05-04-0-05
(CETOP 4.2-4-05-320)



Caudal Máximo en conducto controlado P: 80 l/min

Caudal máximo en conductos libres: 100 l/min

Artículo	Tamaño	Caudal máx. (l/min)	Pres. max. (bar)	Campo reg. (bar)
Z4M3-I/50	NG-10	80	320	5 - 70
Z4M4-I/50	NG-10	80	320	8 - 140
Z4M5-I/50	NG-10	80	320	10 - 210
Z4M6-I/50	NG-10	80	320	15 - 320

Electroválvulas

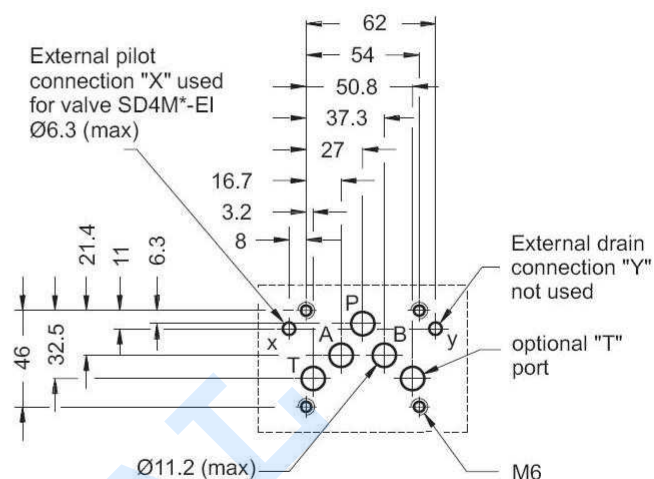
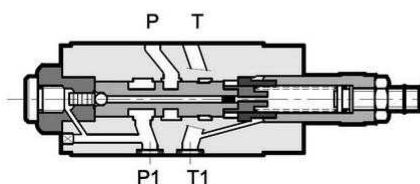
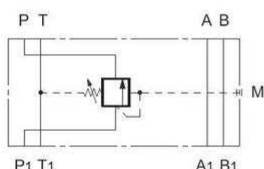
Elementos modulares NG10

Válvula de secuencia

1/1



ISO 4401-05-05-0-05
(CETOP 4.2-4-R05-320)



Presión máxima en conexión T: 10 bar

Caudal máximo en conductos controlados: 80 l/min

Caudal máximo en conductos libres: 100 l/min

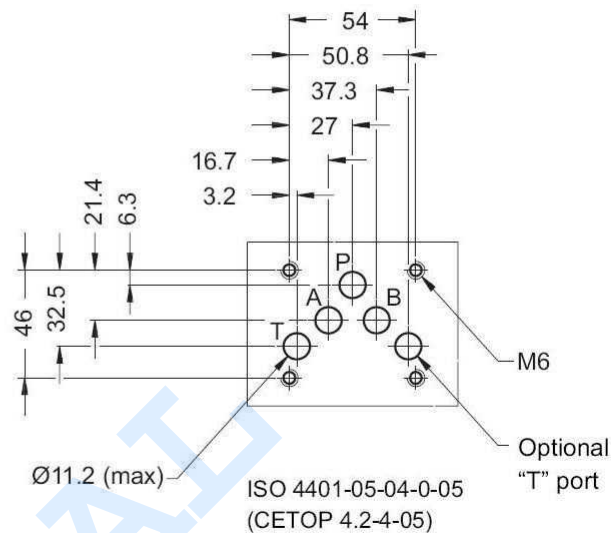
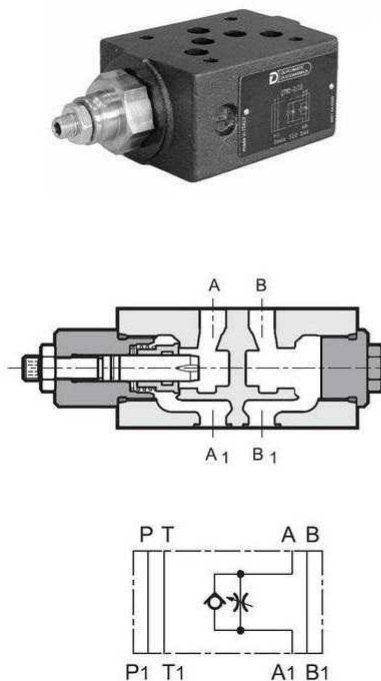
Artículo	Tamaño	Caudal máx. (l/min)	Pres. max. (bar)	Campo reg. (bar)
SD4M3/50	NG-10	80	320	0 - 70
SD4M4/50	NG-10	80	320	0 - 140
SD4M5/50	NG-10	80	320	0 - 210

Electroválvulas

Elementos modulares NG10

Válvula reguladora de caudal simple unidireccional NG10- A

1/1



- Presión de apertura válvula antirretorno** 0,5 bar
- Caudal máximo en conductos controlados:** 80 l/min
- Caudal máximo en conductos libres:** 100 l/min

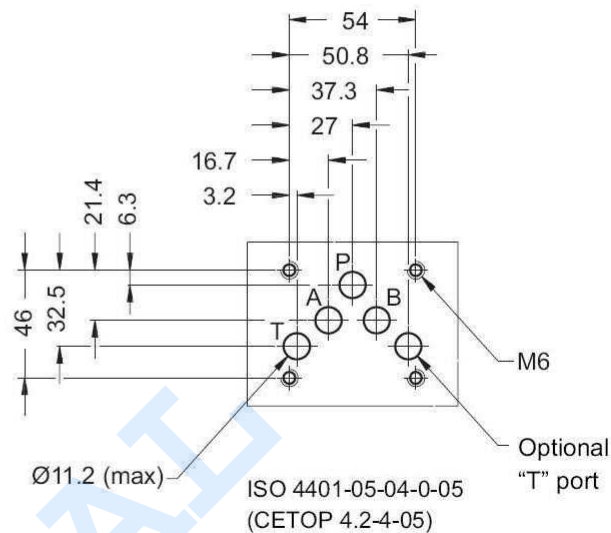
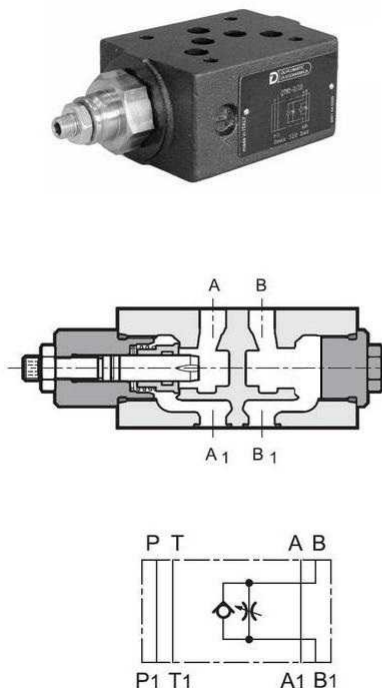
Artículo	Tamaño	Caudal máx. (l/min)	Pres. max. (bar)	Sentido	Tomas A-B
QTM5-SA/10/S	NG-10	80	320	Salida / Output	A

Electroválvulas

Elementos modulares NG10

Válvula reguladora de caudal simple unidireccional NG10 -B

1/1



- Presión de apertura válvula antirretorno:** 0,5 bar
- Caudal máximo en conductos controlados:** 80 l/min
- Caudal máximo en conductos libres:** 100 l/min

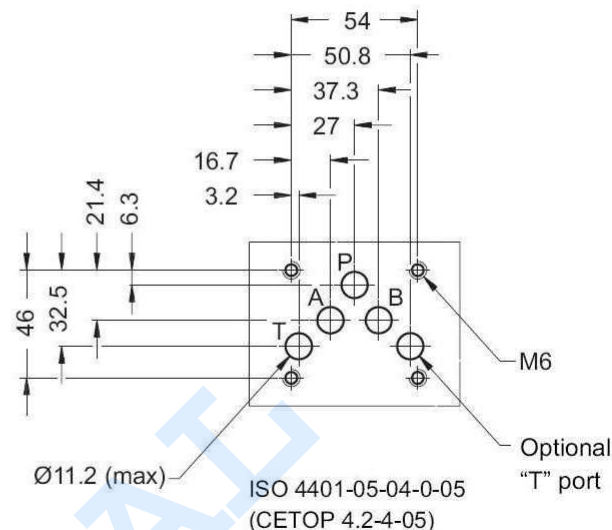
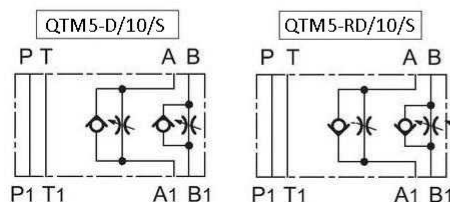
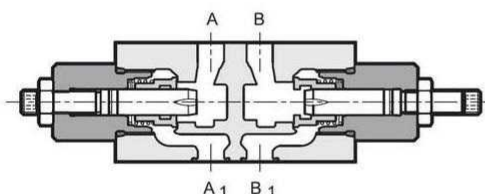
Artículo	Tamaño	Caudal máx. (l/min)	Pres. max. (bar)	Sentido	Tomas A-B
QTM5-SB/10/S	NG-10	80	320	Salida	B

Electroválvulas

Elementos modulares NG10

Válvula reguladora de caudal doble unidireccional NG10 -salida

1/1



Presión de apertura válvula antirretorno: 0,5 bar

Caudal máximo en conductos controlados: 80 l/min

Caudal máximo en conductos libres: 100 l/min

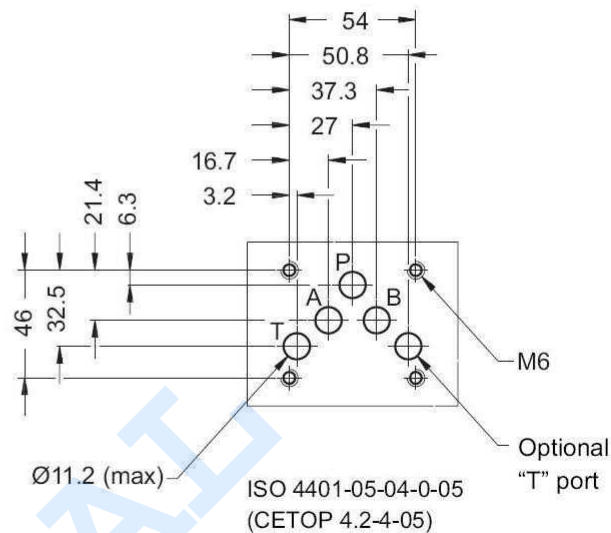
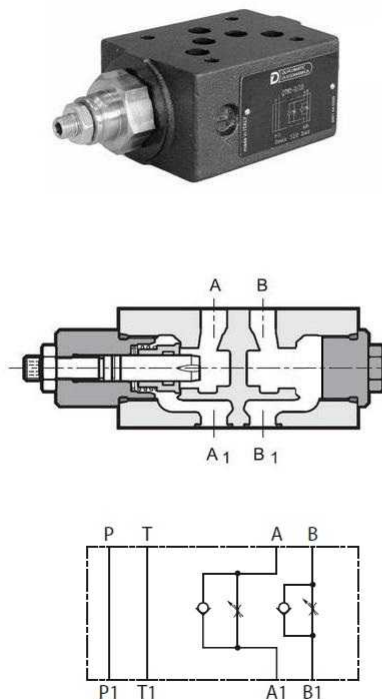
Artículo	Tamaño	Caudal máx. (l/min)	Pres. max. (bar)	Sentido	Tomas A-B
QTM5-D/10/S	NG-10	80	320	Salida	A - B

Electroválvulas

Elementos modulares NG10

Válvula reguladora de caudal doble unidireccional NG10 -entrada

1/1



Presión de apertura válvula antirretorno 0,5 bar

Caudal máximo en conductos controlados: 80 l/min

Caudal máximo en conductos libres: 100 l/min

Artículo	Tamaño	Caudal máx. (l/min)	Pres. max. (bar)	Sentido	Tomas A-B
ERS4M-RD/40	NG-10	80	320	Entrada / In	A - B
QTM5-RD/10/S	NG-10	80	320	Entrada	A - B

Electroválvulas

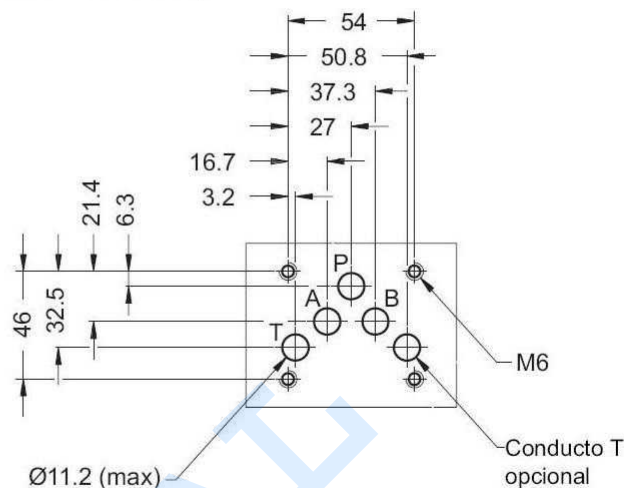
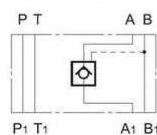
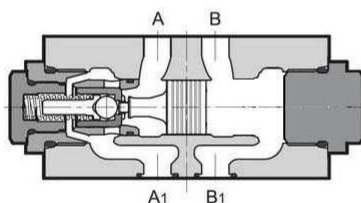
Elementos modulares NG10

Válvula antirretorno simple pilotada NG10 -A

1/1



ISO 4401-05-04-0-05
(CETOP 4.2-4-05-320)



Presión de Apertura Válvula Antirretorno 3 bar

Caudal Máximo en Conductos Controlados 65 l/min

Caudal Máximo en Conductos Libres 100 l/min

Artículo	Tamaño	Pres. max. (bar)	Ratio pilotaje	Tomas A-B
CHM5-SA/10	NG-10	320	5,8 : 1	A
VPP4M-SA/40	NG-10	320	5,8 : 1	A

Electroválvulas

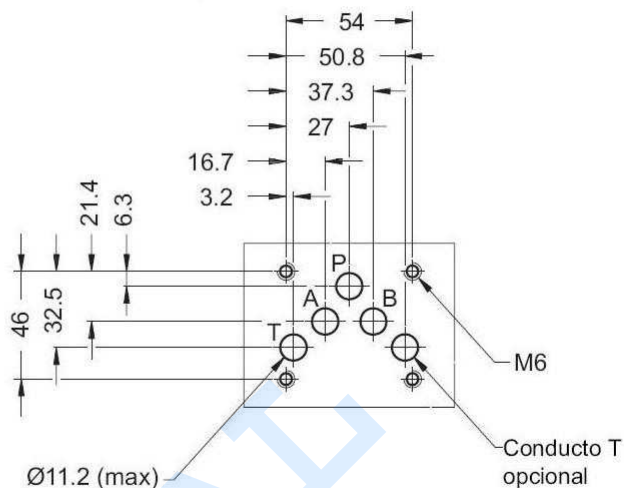
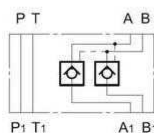
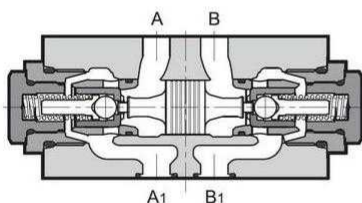
Elementos modulares NG10

Válvula antirretorno doble pilotada NG10

1/1



ISO 4401-05-04-0-05
(CETOP 4.2-4-05-320)



Presión de Apertura Válvula Antirretorno 3 bar

Caudal Máximo en Conductos Controlados 65 l/min

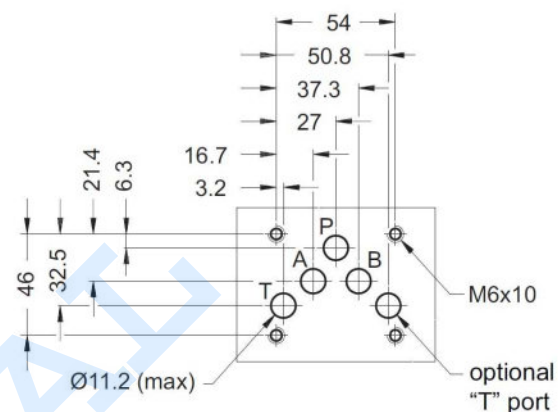
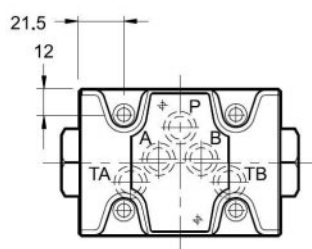
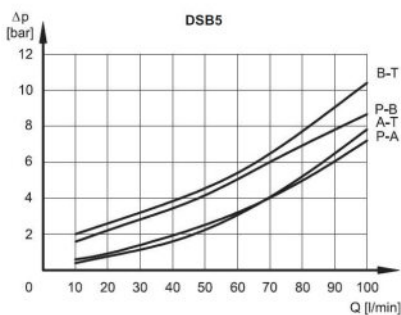
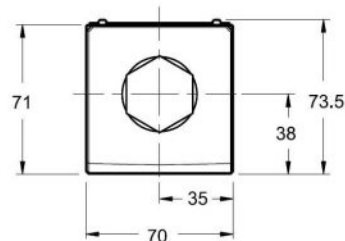
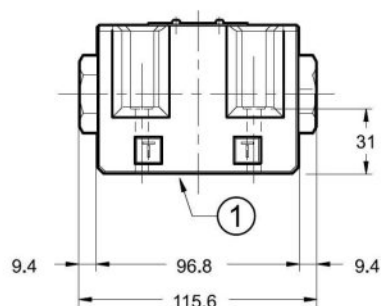
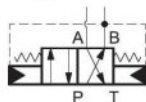
Artículo	Tamaño	Pres. max. (bar)	Ratio pilotaje	Tomas A-B
CHM5-D/10	NG-10	320	5,8 : 1	A - B

Electroválvulas

Elementos modulares NG10

Válvula inversora NG10

1/1



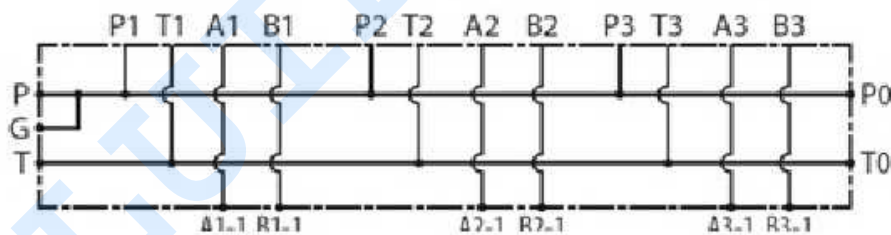
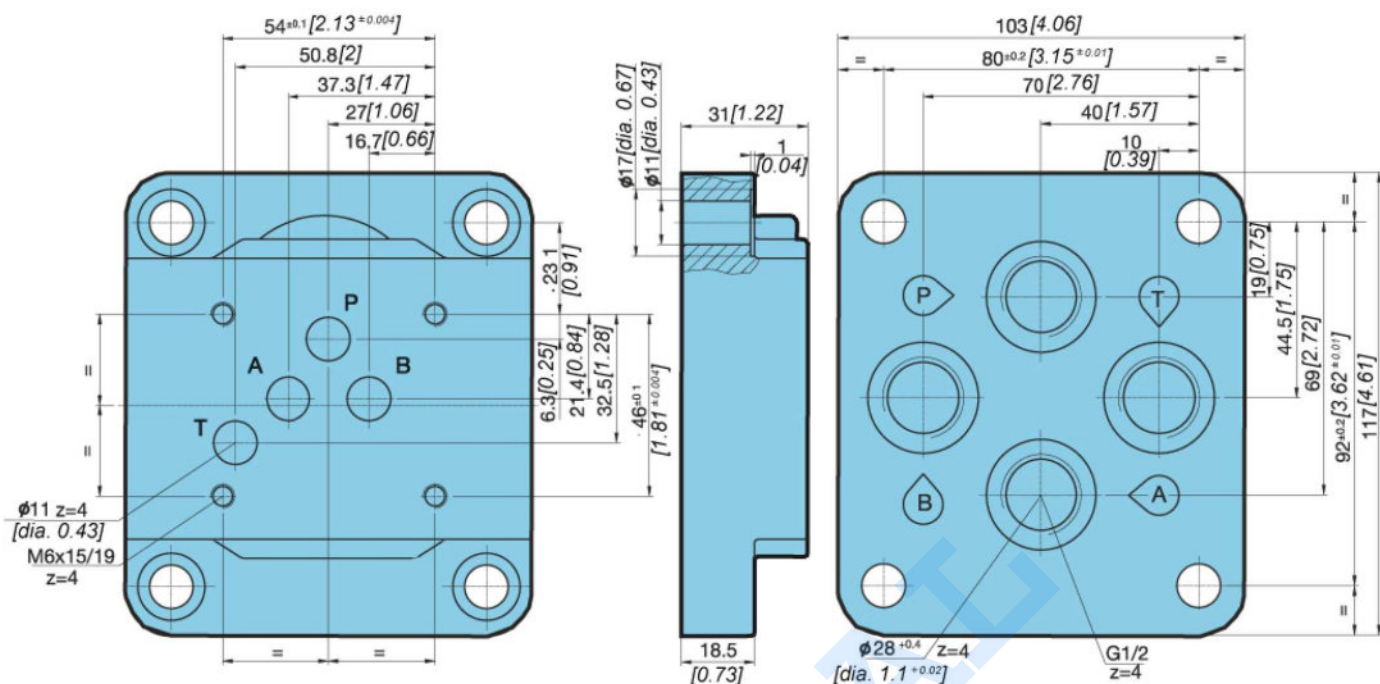
Artículo	Pr Mín (bar)	Caudal mín. (l/min)	CAUDAL MAX (l/min)	Pres. max. (bar)
DSB5-RTA/10N	60	10	100	320

Electroválvulas

Placas base NG10

Placa base NG10 para 1 electro. - sin limitadora

1/1



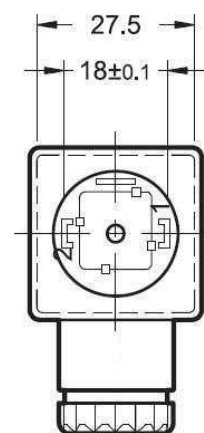
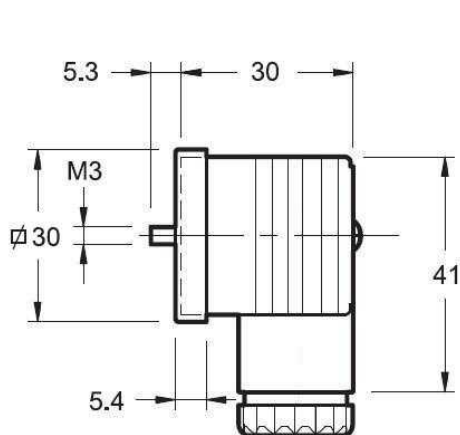
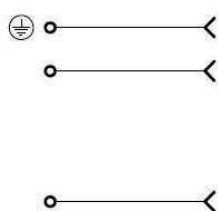
Artículo	R1	Tamaño	Tomas A-B
PBKV-10-12TV	1/2"	NG-10	Verticales / Vertical

Electroválvulas

Conectores eléctricos

Conectores estándar

1/1



Aislamiento: Clase C (IEC 60664-1:2007-04)

Temperatura de Trabajo: -40°C a 90°C

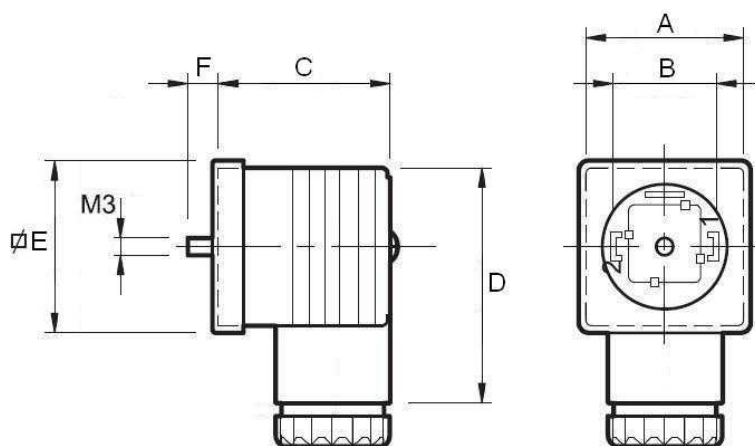
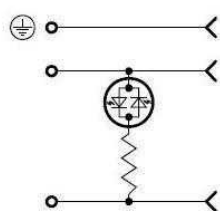
Artículo	Detalles	P(IP)	Color
ECA/A/10	Para 3 patillas / For 3 pins	IP 65 - IEC 60529	Gris / Grey
CON4P	Para 4 patillas / For 4 pins	IP 65 - IEC 60529	Negro / Black
ECA/B/10	Para 3 patillas / For 3 pins	IP 65 - IEC 60529	Negro / Black

Electroválvulas

Conectores eléctricos

Conectores con led

1/1



Aislamiento: Clase C (IEC 60664-1:2007-04)

Temperatura de Trabajo: ·-40°C a 90°C
·CONLEDCC: -40°C a 125°C

Protección: IP 65 - IEC 60529
DIN 43650

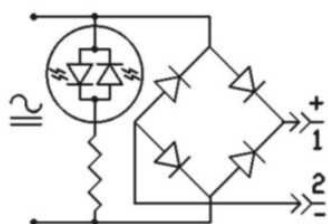
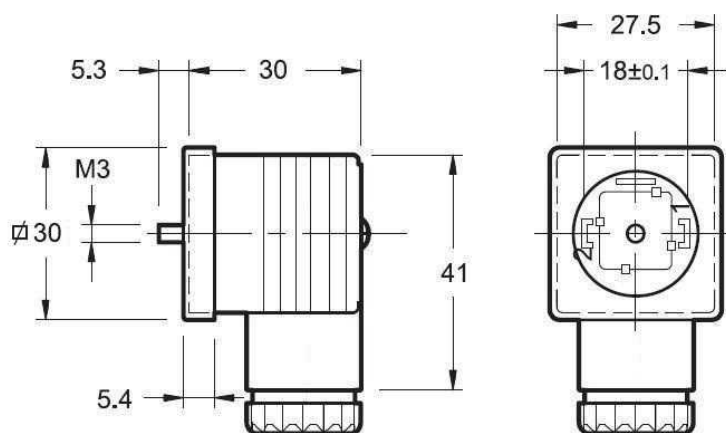
Artículo	Voltaje (V)	Tipo	Color	Intensidad	A	B	C	D	E	F
CONLEDCC	12 - 24 VDC		Transparente / Transparent	10 A	27.2	18	32	42.3	27.7	5.5
CONLEDCEST	12 - 24 VDC	Con Led Estrecho	Transparente / Transparent	10 A	21.5	11	28.8	41.2	28.5	5.5
CONLED220CA	70-250V		Transparente / Transparent	10 A	27.2	18	32	42.3	27.7	5.5

Electroválvulas

Conectores eléctricos

Conectores con rectificador y led

1/1



Aislamiento Clase C (IEC 60664-1:2007-04)

Temperatura de Trabajo -40°C a 90°C

Artículo	Voltaje (V)	Tipo	P(IP)	Color
CONLEDREC110	110/50	Con Led + Rectificador	IP 65 - IEC 60529	Transparente / Transparent
CONLEDREC220	220/50	Con Led + Rectificador	IP 65 - IEC 60529	Transparente / Transparent
CONLEDREC24	24/50	Con Red + Rectificador	IP 65 - IEC 60529	Transparente / Transparent